

Long term care management of developmentally and psychiatrically disabled, morbidly obese male patient with an acute necrotizing MRSA wound on back and flank requiring aggressive surgical debridement and wound care

By: **Mary Webb**, RN, BSN, MA CIC, Infection Control Practitioner, San Mateo Medical Center, County of San Mateo, San Mateo, California

Statement of Problem

A 56 year-old male who resides in a locked psychiatric facility presented to ER with change in mental status, BP 70/30, WBC 40.40, DM, and presumed septic. On day two of admission a rapidly increasing cellulitis was observed on the back, extending to the flank, down the hip and lateral thigh. Aggressive surgical intervention identified multiple abscesses, tracking down to muscle, through the flank expressing copious pus. Cultures were positive for MRSA.

Clinical Management

We will present the progress of a patient, unconscious, on a ventilator with DNR orders, to one who was transferred to long term care, conscious, agitated, combative, assaultive and requiring massive wound care. The goal of treatment was to provide dressing changes with minimal interruption to the patient psyche, maintain a low pain threshold, and provide rapid healing to wound closure that this patient can return to surroundings with which he is familiar.

Methodology

We will demonstrate this patient's progress to healing and discharge without infection and further surgical intervention by using PVA impregnated with Methylene Blue and Gentian Violet dressings.

Results

Wound was healed four months after admission permitting patient to return to facility and his daily comfort level.

Sponsored by: **Hydrofera**

Pioneering Advancements in PVA Technology



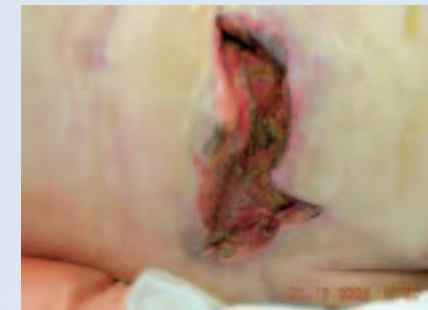
1-6-2006
Wound prior to treatment.



1-9-2006
Wound 3 days into treatment.



1-9-2006
Wound 3 days into treatment.



1-12-2006
Wound 6 days into treatment.



1-14-2006
Wound 8 days into treatment.



1-14-2006
Wound 8 days into treatment.



1-16-2006
Wound 10 days into treatment.



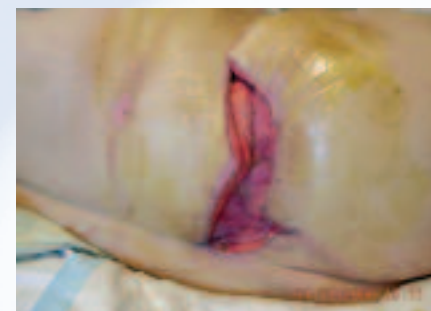
1-18-2006
Wound 12 days into treatment.



1-23-2006
Wound 17 days into treatment.



1-31-2006
Wound 25 days into treatment.



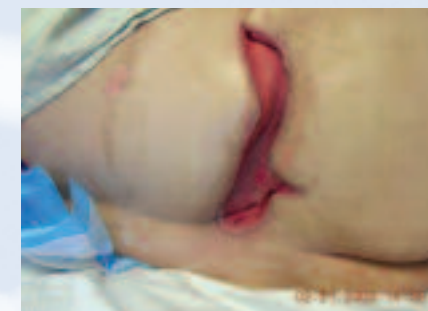
1-31-2006
Wound 25 days into treatment.



2-07-2006
Wound 32 days into treatment.



2-10-2006
Wound 35 days into treatment.



2-21-2006
Wound 46 days into treatment.



2-28-2006
Wound 53 days into treatment.



2-28-2006
Wound 53 days into treatment.



3-07-2006
Wound 60 days into treatment.



3-14-2006
Wound 67 days into treatment.



3-21-2006
Wound 74 days into treatment.



5-17-2006
Wound after 4 months treatment.